



LONG LAKE NEWS

Summer 2021

Boat Parade and Ice Cream Social

It was a beautiful summer afternoon for this year's boat parade and Ice Cream Social. Thanks to everyone who attended or volunteered to make the root beer floats. And a special thank you to the Sheridans for hosting the event again!

The winners for best decorated boat were first place, Construction Zone; second place, Goose/swan; third place, Great Outdoors. And honorable mention were the children that were dressed in the eagle and Statue of Liberty costumes.

Congratulations to all our winners!



Animal Shelter Donations

Candy and John McMahon set up a donation table for the animal shelter at the Ice Cream Social. Thanks to everyone who contributed items. We know it will be greatly appreciated.



Loon Update

We have two loon chicks this year. One in the middle section and one in the south end. Both are doing well.

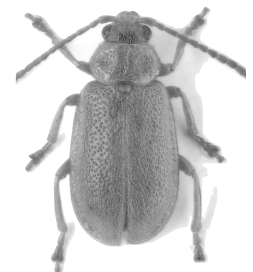
Clean Boats, Clean Waters (CBCW) Update



This year there have been seven volunteer inspectors for Long Lake and four volunteer inspectors for Des Moines Lake at the boat landing, for a total of 144 hours of boat landing coverage. Please contact Mark Michel if you would like to volunteer at the landing. His phone is 715-281-8953. In addition, we have two surveillance cameras at the boat landing that are working well.

Purple Loosestrife Beetles

Mark Michel has distributed over 1,500 beetles to date. He has distributed them five times in these locations: north of Des Moines Lake trail, west side of Des Moines Lake, twice in various spots on Long Lake, the south side of East Long Lake Road, and on the north end of Hanscom Lake. Mark said beetles are still populating in the cage. He adds new plants to the pen as the old ones are eaten. He hopes to be able to distribute them into August. He would like to distribute more beetles in the Hanscom Lake location, because the plants flower and the wind blows seeds into Long Lake. Please thank Mark for all his demanding work with the beetles and boat landing inspections the next time you see him.



Brush Up on the Fishing Regulations

Fishing regulations are used as a tool to ensure good fishing exists in the future. As an ethical angler, it is important to follow regulations to help protect Wisconsin's fish populations for the future and maintain numbers and sizes of fish in a waterbody.

Bag limits, length restrictions, and seasons can vary between waterbodies, even within the same county. Please give the *2021-2022 Guide to Hook and Line Fishing Regulations* a quick read for the area you plan to fish. It can be downloaded from the Wisconsin DNR website.

Collaborative AIS Detection Prevails in a Time of Crisis

Wisconsin's aquatic invasive species partners stood the challenge of the pandemic, donned face-masks, rakes, nets, and waders and monitored more than 1,000 locations documenting over 150 new AIS populations in 2020. About half of these monitoring efforts were by citizens. The importance of citizen detectors has become especially apparent during the pandemic!

Fortunately, most discoveries were commonly managed species like curly-leaf pondweed and purple loosestrife. The three new detections of zebra mussels were all by citizens who are considering joining the Citizen Lake Monitoring Network to assess the zebra mussel population changes over time. The six new discoveries of less common NR40-prohibited species were all confined to private ponds and small localized areas. These prohibited species included water lettuce, floating marsh pennywort, graceful cattail, butterbur, common reed grass, and Japanese stilt grass.

You can become familiar with AIS by using the Wisconsin Aquatic Invasive Species Early Detector Handbook, available through the Extension Lakes online bookstore (uwsp.edu/uwexplakes) in hard copy or as a free PDF. If you find something suspicious in a lake or river near you, let your regional DNR biologist know about it.

Interested in joining our early detection team? Check out these statewide programs.

AIS Snapshot Day: One Saturday in August, hundreds of volunteers and professionals team up across the state to search for and document aquatic invasive species in lakes and rivers. Website: wisconsinrivers.org/statewide-snapshot-day

Citizen Lake Monitoring Network: Join over 1,000 citizen volunteers to learn more about AIS, collect high-quality lake monitoring data, and share those data to inform lake management. Website: uwsp.edu/uwexplakes

Water Action Volunteers: Join hundreds of volunteers around Wisconsin who monitor the health of their local streams. Website: wateractionvolunteers.org

Reprinted from "Lake Tides," vol. 46, no. 2, Spring/Summer 2021, by Maureen Ferry

Association Board of Directors

Below is contact information for all your board members:

- Steve Hunnicutt, President: 651-380-0782, hunnicutts17@gmail.com
- Mark Michel, Vice President: 715-281-8953, mfmichel71@gmail.com
- Tim Tamlyn, Treasurer: 612-396-8680, timtamlyn@outlook.com
- Malinda Tamlyn, Secretary: 612-310-6181, mtamlyn@mchsi.com
- Dave Foote, Director: 763-645-3984, barbdavefoote@me.com
- Brad Zeller, Director: 715-520-9651, bzeller674@gmail.com
- Pat Sheridan, Director nominee: 612-910-3839, pats@onetecheng.com

- ! We're all for helping the environment and saving money for other important activities. If you would like to receive this newsletter by email instead. Please send an email to timtamlyn@outlook.com, and you'll be added
- to our email list. Thank you!

Long Lake News is published around four times a year by the Long Lake Property Owners Association. The information provided in this newsletter does not, and is not intended to, constitute legal advice; instead, all information, content, and materials are for general informational purposes only. Copyright © 2021 Long Lake Property Owners Association Inc. All rights reserved.

2021 Membership Dues. The cost is still \$35. Checks can be made out to Long Lake Association and mailed to Tim Tamlyn, 6220 Arbor Ln, Excelsior, MN 55331. Payment can also be made with Venmo. Tim's username is timtamlyn. Please indicate it is for LLA dues.

Name(s) _____

Mail Address _____

Phone(s) _____

Email(s) _____

Lake Address _____



Visit us online! www.wislla.org www.facebook.com/groups/wislla

LONG LAKE ASSOCIATION
6220 ARBOR LN
EXCELSIOR, MN 55331

RETURN SERVICE REQUESTED